



GLUETEC GROUP



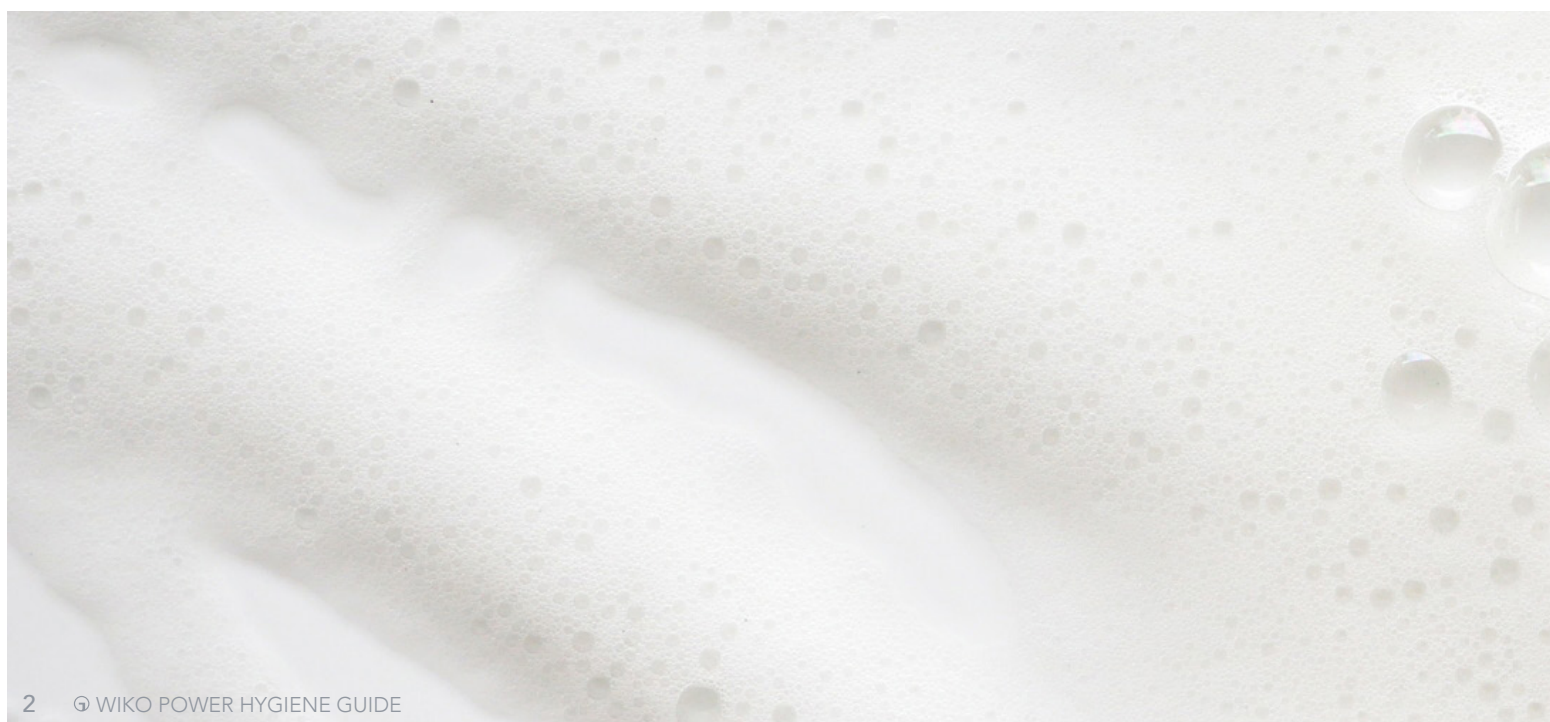
THE HYGIENE EXPERTS.

WIKO® POWER HYGIENE GUIDE

EFFECTIVE CLEANING MEETS SKIN PROTECTION

Content

1	POWER HAND CLEANER	04
	Skin cleansing for moderate to heavy soiling	
2	HAND PROTECT	06
	Skin protection in everyday industrial use	
3	POWER HAND SOAP	07
	Gentle cleansing at all times	
4	SKIN PROTECTION PLAN	08
	Cleansing, protection and care with a system	
5	POWER HAND GEL	10
	Hand hygiene without water	
6	HAND CARE	11
	Skin care and regeneration	
7	POWER SHOWER GEL	12
	Body care after odour-intensive work	
8	POWER CLEANING WIPES	15
	Simply wipe off, done	



Clean. Safe. GLUETEC.

Welcome to the world of hygiene solutions that work.

As a specialist in innovative adhesives, sealants, cleaners and aerosols, we at GLUETEC develop tailor-made solutions that meet the highest standards. Our focus: effectiveness, user-friendliness and sustainable product concepts for industry and trade.

Personal hygiene reimagined

From powerful hand cleaners to well-designed hygiene systems, the GLUETEC hygiene range offers a comprehensive portfolio for clean results and optimal skin protection in everyday working life.

Our bestseller: the WIKO® POWER HAND CLEANER. It effortlessly removes even stubborn dirt such as oil, grease or soot, is gentle on the skin and reduces consumption thanks to its economical formula. Practical: natural perlite particles prevent blocked drains – a clear advantage in any workshop.

Discover our comprehensive hygiene concept on the following pages and find the perfect solution for your company in the GLUETEC skin protection plan.

Your partner for clean processes

We believe that partnership-based exchange creates real added value. Whether you need technical advice, individual product optimisation or innovative packaging solutions, we support you with expertise and commitment. Let's shape the future of your processes together.

Browse through our product range and discover solutions that are perfectly tailored to your processes. From the workshop to production: with GLUETEC, hygiene becomes simple and efficient.

GLUETEC – your partner for systematic hygiene.

Christine Kopp
Management

☎ +49 9369 9836-0

✉ info.de@gluetec-group.com





WIKO® POWER HAND CLEANER

WIKO® POWER HAND CLEANER is a high-quality, medium-viscosity washing cream that has been specially developed for medium to heavy soiling and dermatologically tested. The formula has the following features:

- High-quality perlite abrasives ensure effective cleaning
- pH-neutral formula protects the skin's natural acid mantle
- Pleasant and fresh orange oil fragrance

Advantages:

- Gentle on the skin: Suitable for use several times a day
- Biodegradable: 90% biodegradable and therefore environmentally friendly
- Non-clogging: Perlite as an abrasive prevents drains from clogging
- Economical: Even a small amount is sufficient for thorough cleaning

Areas of application & industries:

- Workshops
- Agricultural engineering
- Manufacturing
- Offices
- Crafts
- Vehicle and bicycle repair
- Mining

Available container sizes:

- 500 ml bottle
- 2.000 ml bottle
- 4.000 ml bucket*
- 5.000 ml canister*
- 20.000 ml refill canister

* Accessories available separately.

Further information: www.gluetec-group.com

Or simply scan the QR code



WIKO® POWER HAND CLEANER ACCESSORIES



4 l bucket

Wall bracket



Stainless steel wall bracket suitable for 4 l buckets

- Easy to install
- Secure stand
- Easy maintenance

Dispenser



Plastic dispenser suitable for 4 l buckets in white-red

- Easy to install
- Easy to handle
- Dosing quantity 7 ml

Dispenser



Dosing dispenser made of metal and red plastic suitable for 4 l buckets

- Robust design
- Easy to handle
- Dosing quantity 2 - 5 ml



5 l canister

Dispenser



Plastic dispenser DIN 38 suitable for 1 l bottle and 5 l canister in white

- Easy to install
- Easy to handle
- Standardized thread



Also suitable for the containers of the WIKO® POWER HAND SOAP

(see next pages)



2 l soft bottle

Wall dispenser



Wall dispenser for 2 l soft bottle in white

- Easy to install
- Easy to handle
- Secure hold



You can also find these and other accessories on our website

www.gluetec-group.com



WIKO® HAND PROTECT

WIKO® HAND PROTECT is a high-quality liquid cream for preventive skin care in commercial environments. The silicone-free skin protection emulsion provides reliable protection when handling with changing working materials and protects the skin from everyday stresses. The cream forms a stable, non-staining protective film on the skin. The formulation is characterised by the following properties:

- Nourishing and regenerating ingredients, such as lavender oil
- Ideal combination of protective and care ingredients
- For skin protection before work in industry, trade and laboratories

Advantages:

- Silicone-free skin protection emulsion
- Protects against everyday dirt such as oil, dust and lubricants
- Nourishes and regenerates thanks to allantoin, glycerine and lavender extracts
- Quickly absorbed without leaving a greasy residue
- Dermatologically tested for skin compatibility
- Very economical

Areas of application & industries:

- | | |
|----------------------------|------------------------------|
| • Workshops | • Crafts |
| • Agricultural engineering | • Vehicle and bicycle repair |
| • Manufacturing | • Mining |
| • Offices | • Laboratories |

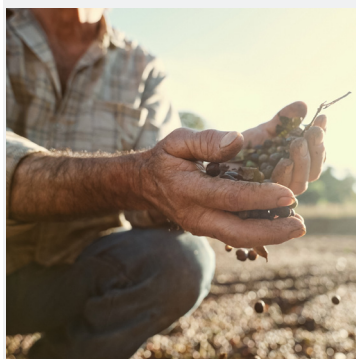
Available container sizes:

- 500 ml bottle

Further information: www.gluetec-group.com

Or simply scan the QR code





WIKO® POWER HAND SOAP

The WIKO® POWER HAND SOAP combines deep cleansing with maximum skin compatibility and is ideal for daily use in industry and trade.

The soap has the following properties:

- Effective, gentle and thorough cleaning
- pH-neutral, solvent-free and moisturising
- Available odourless or with a natural apple scent

Advantages:

- Particularly skin-friendly and nourishing
- 2 variants: odourless for sensitive skin or subtle, invigorating apple aroma
- Reliably removes oil, grease and other dirt without the use of solvents that could dry out the skin
- Ideal for daily use in industry and trade

Areas of application & industries:

- Workshops
- Agricultural engineering
- Manufacturing
- Offices
- Crafts
- Vehicle and bicycle repair
- Mining

Available container sizes:

- 1.000 ml bottle
- 5.000 ml canister*

* Accessories optionally available separately.

Further information: www.gluetec-group.com

Or simply scan the QR code



WIKO® POWER SKIN PROTECTION PLAN

ICON	WHAT AND WHEN?	WHAT WITH?
	SKIN PROTECTION <ul style="list-style-type: none"> • before work • several times a day • after breaks • after washing hands 	WIKO® HAND PROTECT Protects the skin in everyday industrial use
	SKIN CLEANSING <ul style="list-style-type: none"> • several times a day as required • before breaks • when visibly dirty • after using the toilet • after work 	WIKO® POWER HAND SOAP Gentle cleansing at any time
		WIKO® POWER HAND CLEANER For moderate to heavy soiling
	HAND HYGIENE <ul style="list-style-type: none"> • before work • during work • after work 	WIKO® POWER HAND GEL Cleans without water and prevents the spread of bacteria
	SKIN CARE <ul style="list-style-type: none"> • several times a day • at the beginning of longer breaks • after work 	WIKO® HAND CARE Regenerates and cares for the skin with beeswax
	BODY CARE <ul style="list-style-type: none"> • before work • after work 	WIKO® POWER SHOWER GEL Refreshes after odorous work

OUR PRODUCT	HOW?	LINK
	<p>Dispense skin protection product in the required amount. Rub a sufficient amount evenly into the hands, starting from the back of the hands.</p> <p>Do not forget the spaces between the fingers, nail folds, and wrists.</p>	 To the product
	<p>Moisten hands and apply a suitable amount of 1.5 to 2 g. This corresponds to approximately half a pump. Lather with water and spread evenly. Then rinse off under running water and dry. Use skin protection or skin care.</p>	 To the product
	<p>Moisten hands and apply a suitable amount of 2.5 to 3 g. This corresponds to approximately the size of a 1 euro coin. Lather with water and rub off heavy soiling. Rinse thoroughly and dry. Use skin protection or skin care.</p>	 To the product
	<p>Dispense skin hygiene product in the correct amount. Rub a sufficient amount evenly into the back of the hands. Do not forget the spaces between the fingers, nail folds and wrists.</p>	 To the product
	<p>Dispense skin care cream in the correct amount. Rub a sufficient amount evenly into the hands, starting from the back of the hands. Don't forget the spaces between your fingers, nail folds and wrists.</p>	 To the product
	<p>Dispense shower gel in the desired amount. Apply a sufficient amount evenly to the skin and hair with your hands and rub in. Rinse thoroughly with water.</p>	 To the product



WIKO® POWER HAND GEL

WIKO® POWER HAND GEL is a highly effective hand cleaning gel containing approx. 70% ethanol, which has been specially developed for thorough hand cleaning – wherever soap and water are not available. The fast-acting formula reliably reduces unhygienic residues after just 30 seconds and thus helps to effectively prevent the spread of unwanted germs. The gel has the following properties:

- Hygienic cleanliness without soap and water
- Protects the skin from drying out
- Fast action in just 30 seconds

Advantages:

- Nourishing thanks to moisturising glycerine
- Skin-friendly formula – even with frequent use
- Alcohol-based: contains approx. 70% ethanol
- Gel texture – easy to apply and quickly absorbed
- Very economical

Areas of application & industries:

- | | |
|----------------------------|------------------------------|
| • Workshops | • Crafts |
| • Agricultural engineering | • Vehicle and bicycle repair |
| • Manufacturing | • Field service |
| • Offices | • Travel |

Available container sizes:

- 500 ml bottle

Further information: www.gluetec-group.com

Or simply scan the QR code





WIKO® HAND CARE

WIKO® HAND CARE is a silicone-free, moisturising skin care lotion for professional use. It protects against drying, strengthens the skin barrier, smoothes dry areas and soothes irritated skin. It also promotes regeneration and, thanks to beeswax, it forms a breathable protective layer without clogging the pores. The lotion has the following properties:

- Absorbs quickly and leaves no greasy film
- Silicone-free, fragrance-free and dermatologically tested
- Suitable for hands and body as a care product after cleansing

Advantages:

- Protects the skin from drying out thanks to its intensive care effect
- Ideal for care after work and skin cleansing
- Quickly absorbed, leaves no residue
- Very economical

Areas of application & industries:

- Workshops
- Agricultural engineering
- Manufacturing
- Offices
- Crafts
- Vehicle and bicycle repair
- Mining

Available container sizes:

- 500 ml bottle

Further information: www.gluetec-group.com

Or simply scan the QR code





WIKO® POWER SHOWER GEL

The WIKO® POWER SHOWER GEL is a shower gel for skin and hair that cleanses powerfully yet is gentle. It effortlessly removes organic dirt, cleanses the skin deep into the pores and reliably removes dirt - without any aggressive solvents. Thanks to its versatility, it is ideal for professional use in all industries:

- Especially after working in environments with strong odours
- Optimal combination of powerful cleaning and gentle care
- Protects the skin's natural acid mantle, even with daily use
- Pleasant and fresh scent of orange oil

Advantages:

- Effectively cleanses dirt and odours
- Suitable for skin and hair
- pH-neutral and suitable for sensitive skin
- Protects against dryness thanks to urea
- Free from solvents, microplastics and silicones
- Alkali and soap free

Areas of application & industries:

- | | |
|-----------------|---|
| • Workshops | • Crafts |
| • Agriculture | • Sewer construction/underground railway operations |
| • Manufacturing | • Motor vehicle/commercial vehicle businesses |
| • Catering | • Waste disposal |

Available container sizes:

- 500 ml bottle

Further information: www.gluetec-group.com

Or simply scan the QR code



A close-up, low-angle shot of a man's head and shoulders under a shower. Water is spraying from the top left, creating a dynamic, high-contrast scene. The man's face is tilted back, and his eyes are closed. His skin is wet, with numerous water droplets visible on his forehead, nose, and shoulders. The background is a plain, light-colored wall.

Clean. Safe. GLUETEC.

Your partner for innovative hygiene solutions.



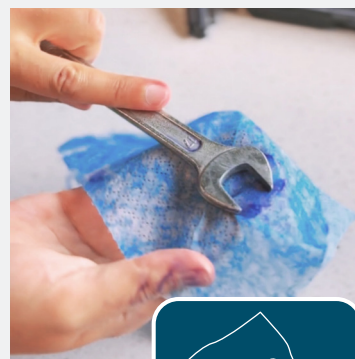
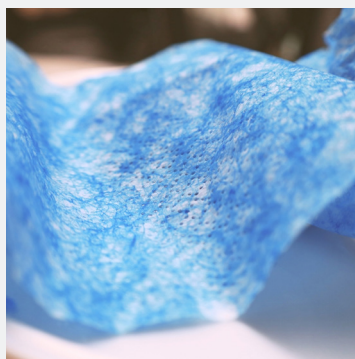
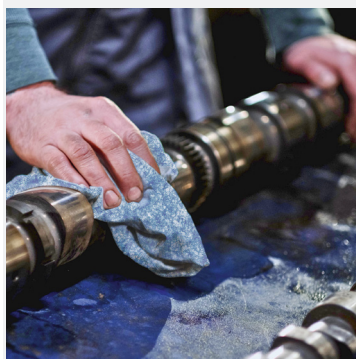
Hygiene that works – with GLUETEC

Every clean solution starts with a clear requirement: products that not only clean, but also protect. That is exactly what the GLUETEC hygiene series stands for. Whether in the workshop, production or service – our innovative cleaning solutions combine maximum effectiveness with user-friendliness and sustainable concepts.

Discover more products from our range of cleaners and experience how we are rethinking hygiene for industry and trade.

GLUETEC GROUP – your partner for innovative hygiene solutions.





WIKO® POWER CLEANING WIPES

Effective cleaning without water. Just wipe, done.

Stubborn dirt, but no water at hand? The new WIKO® POWER CLEANING WIPES are the perfect solution – with a two-sided system for maximum cleaning power, without any aggressive chemicals or liquid additives.

The coarse side with blue plastic fibres effortlessly removes stubborn dirt. The soft side? It's ideal for delicate surfaces, with no risk of scratching. The generous size of the cloth ensures quick cleaning of machines, tools or surfaces. The wipes work immediately with light pressure, and the resealable lid keeps them moist and ready for use for a long time.

Professional cleaning with just one handle. The new on-the-go solution for workshops, construction sites, machinery and industrial applications.

Advantages:

- Removes oil, grease, fresh paint, adhesive residue, polyurethane, rubber abrasion, tar and tree resin
- Solvent-free, efficient and safe
- Two-sided design
- No water or other cleaners needed

Areas of application & industries:

- Workshops
- Crafts
- Manufacturing
- Offices

Available container sizes:

- 90 pieces in a plastic bucket with dosing lid

Further information: www.gluetec-group.com

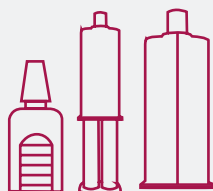
Or simply scan the QR code



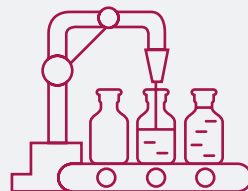
YOUR FULL-SERVICE SUPPLIER FOR CHEMICAL-TECHNICAL PRODUCTS.



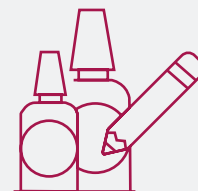
DEVELOPMENT



PACKAGE SOLUTIONS



CONTRACT FILLING



PRIVATE LABEL

GLUETEC GROUP

 **GLUETEC Germany**

GLUETEC Industrieklebstoffe GmbH & Co. KG

Am Biotop 8a
97259 Greußenheim
USt.-Id. Nr.: DE259690817

Tel.: +49 9369 9836-0
E-Mail: info.de@gluetec-group.com

 **WIKO Poland**

WIKO Klebetechnik Sp. z o.o.

ul. Ekonomiczna 8
42-271 Częstochowa
NIP: PL5222772645

Tel.: +48 34 37258-58
E-Mail: info.pl@gluetec-group.com